

CRV431 Directly Targets Liver Fibrosis in Murine NASH Models and Human Liver Slices



Ure DR¹, Kuo J², Trepanier DJ¹, Mayo PR¹, Gallay P², and Foster RT¹

¹Hepion Pharmaceuticals (Canada, USA) ²Scripps Research Institute (USA)

BACKGROUND

CYCLOPHILINS: multi-isoform family of enzymes that control proline bond isomeric structure and in turn regulate protein conformation and function. Collagen synthesis is one function regulated by ER-resident cyclophilin B.

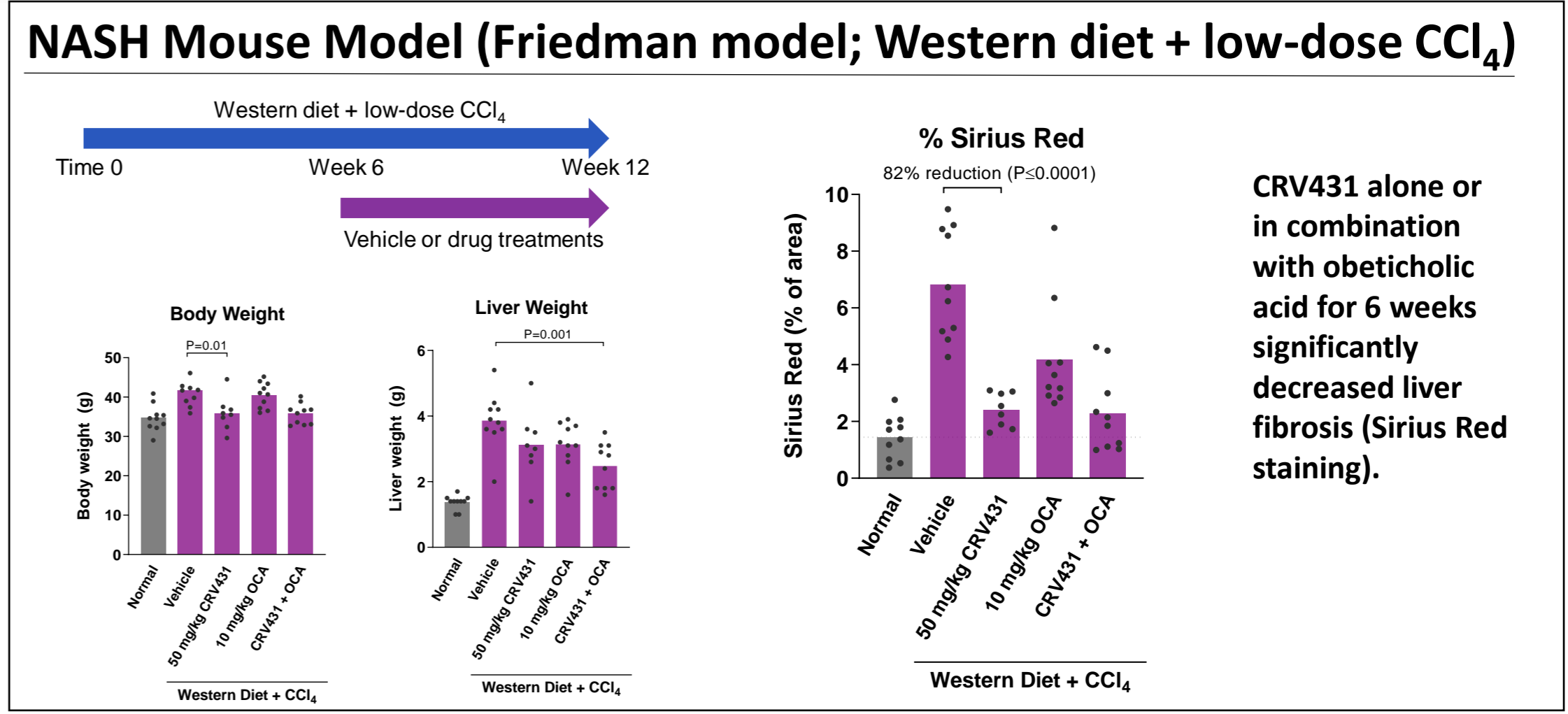
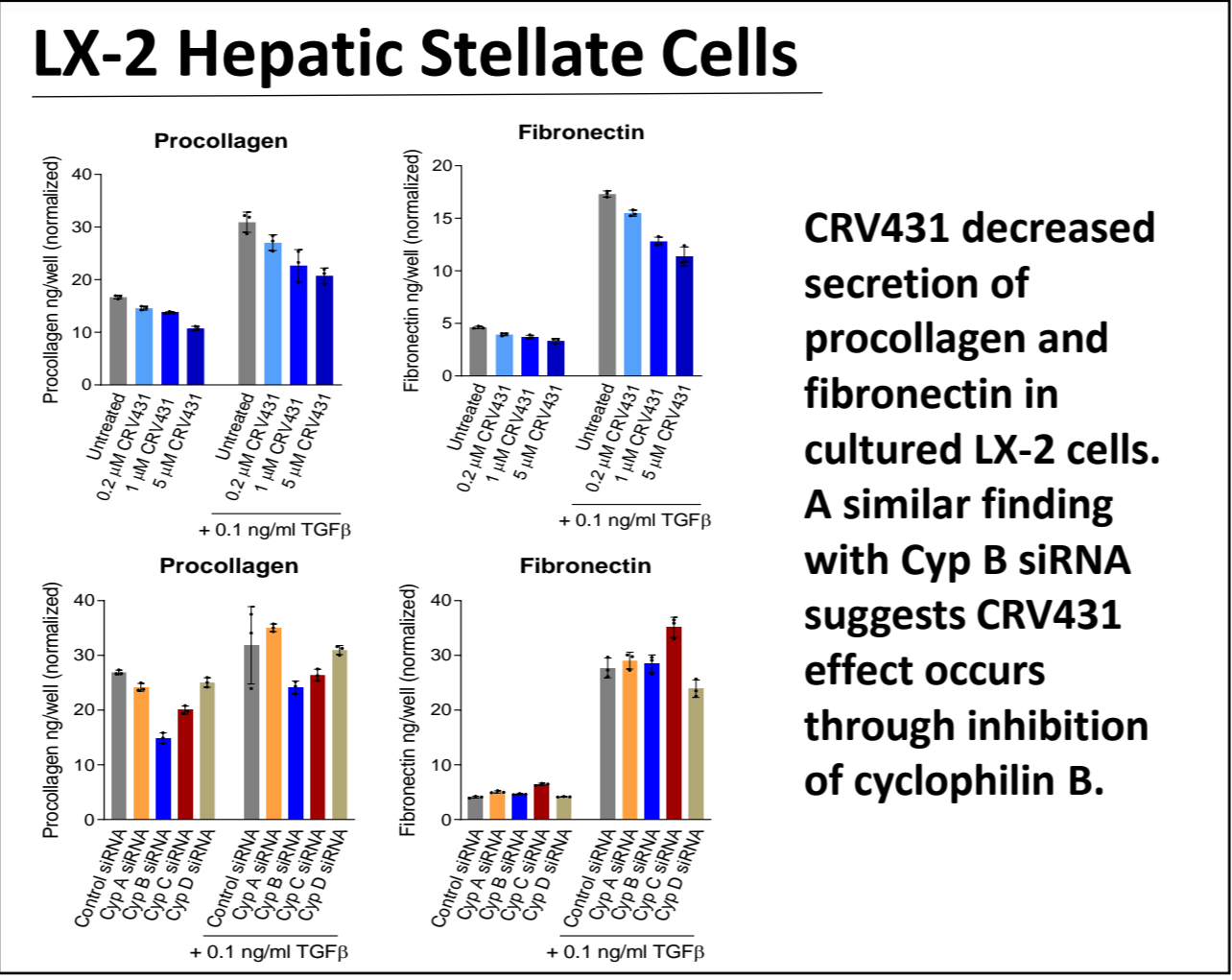
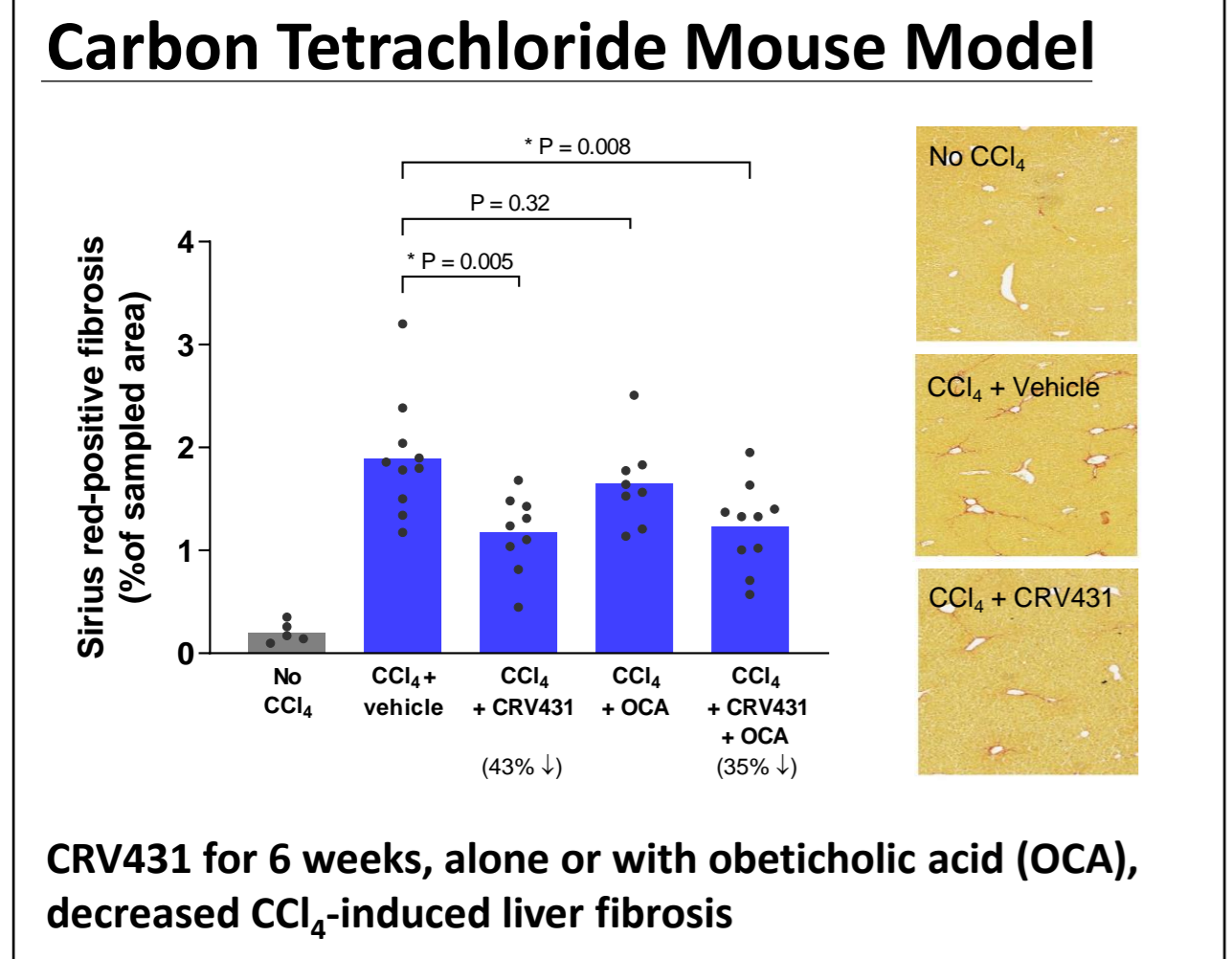
CRV431: a pan-cyclophilin inhibitor (nonimmunosuppressive analog of cyclosporine A) currently in a Phase 1 multiple ascending dose clinical study.

METHODS

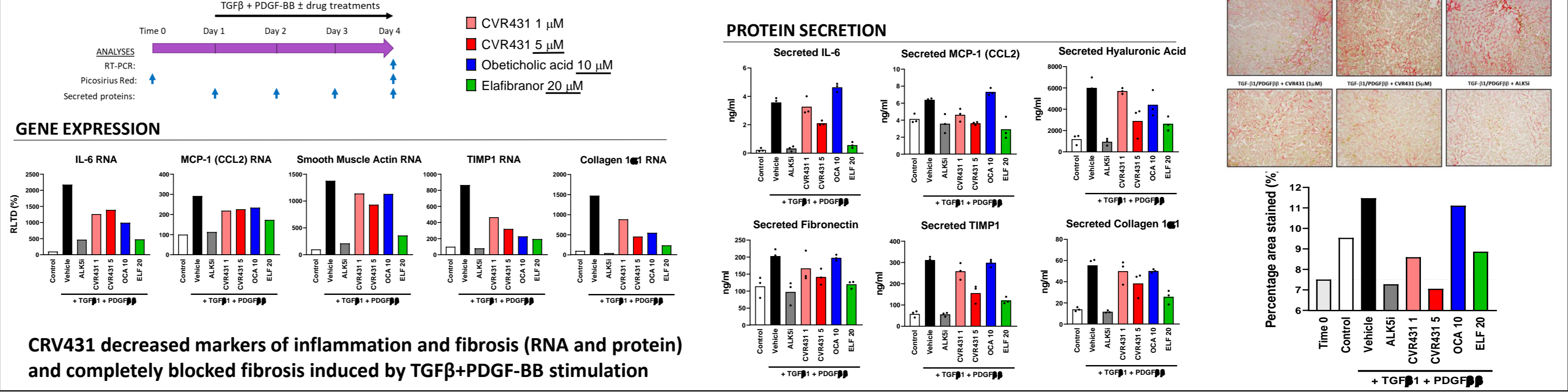
Cell Cultures
 Procollagen and fibronectin secretion from cultured cells
Human Precision Cut Liver Slices (Fibrofind, UK)
 Healthy margins of liver cancer resections. TGFβ+PDGF-BB stimulation for 3 days. Measurement of tissue RNA, secreted proteins, and Sirius Red collagen.

Animal Models
 1) Carbon tetrachloride in C57BL/6 mice: 0.5 ml/kg, i.p. 2x/week, for 6 weeks
 2) NASH model in C57BL/6 mice: 200 μg streptozotocin i.p. plus high fat diet (HFD)
 3) NASH model (Friedman) in C57BL/6 mice: Western diet + sugar-water + low-dose i.p. carbon tetrachloride (CCl₄)
Drug Administration in Animal Models
 CRV431 (50 mg/kg/day), obeticholic acid (10 mg/kg/day), or CRV431 vehicle by oral gavage once-daily

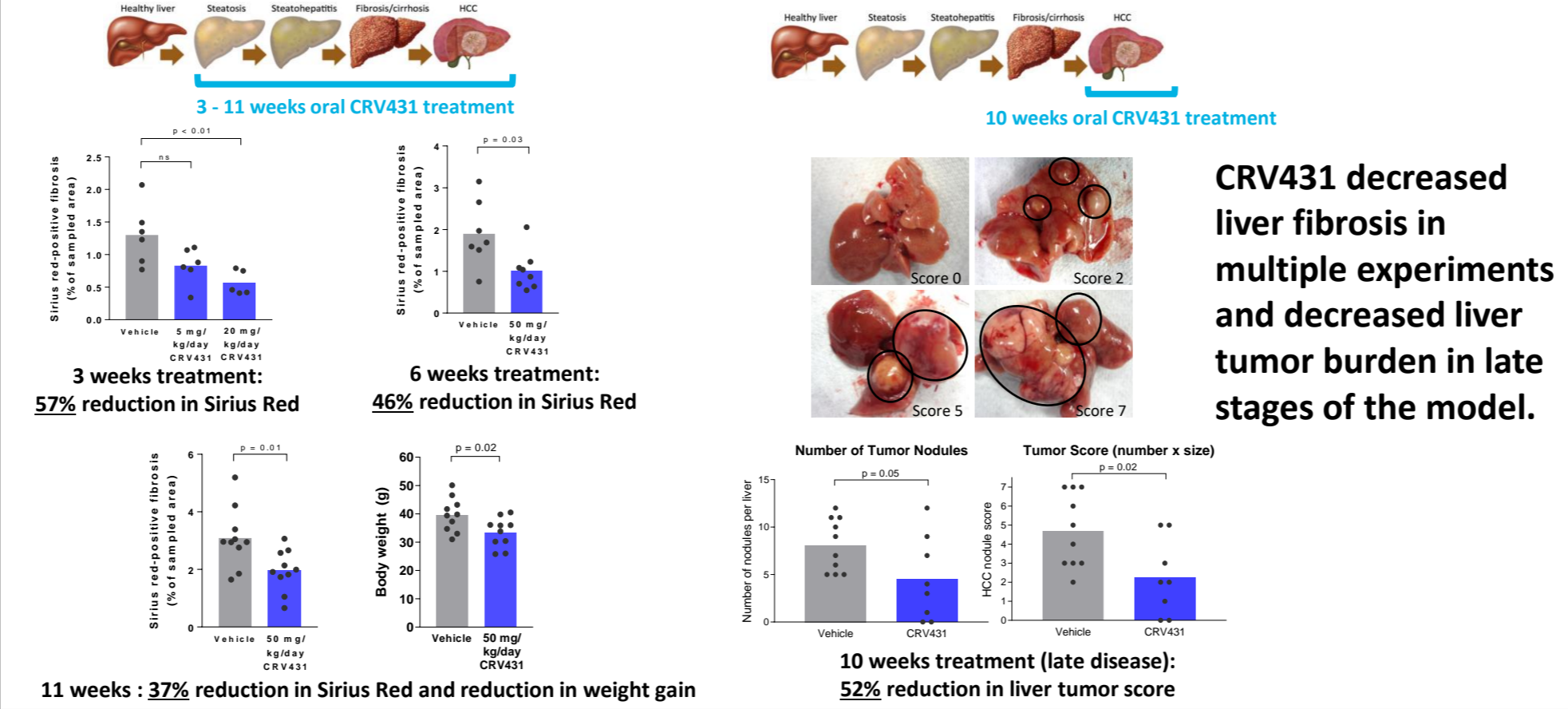
RESULTS



Human Precision Cut Liver Slices (Fibrofind, Newcastle, UK)



NASH Mouse Model (streptozotocin + high fat diet)



CONCLUSIONS

- CRV431 directly reduced collagen production in cultured cells and reduced liver fibrosis in multiple models, which likely occurred in part through inhibition of ER-resident cyclophilin B.
- CRV431 also demonstrated anti-inflammatory and anti-tumor effects which may occur through other cyclophilin-dependent mechanisms.

